

Installation Manual

Motorized Roller Screen ER 2/20 **with standard guide rails**

Please follow these instructions by all means!

Video guide:
stream via QR-Code or
download it from the
NEHER-App



For your safeness



- Assembly and electrical installation may only be carried out by qualified personell.
- There are live parts inside of the roller screen box. Therefore make sure that the power supply has been interrupted before opening the roller screen box (switching off the appropriate fuse etc.)
- The connection of the motor may only run in voltage-free condition.
- Make sure that the area beneath the window/door can not be entered during the installation (if necessary, shut off).
- When working under raised parts or working equipment, they must be secured against falling by suitable equipment.
- The insect screen is not qualified as a fall protection.



General information



- Roller screens with radio-controlled motors may not be operated in areas with increased risk of interference (hospitals, airports).
- The product may not be subjected to modifications, additions or alterations.
- Check the parts on proper condition before assembly. Damaged, incomplete or obviously defective parts may not be installed.
- Operation devices like interlocked push buttons or remotes must be installed at a maximum height of 1.3m.



Please read this manual carefully as we do not assume liability for defects resulting from incorrect assembling.
Use only stainless steel screws for mounting.

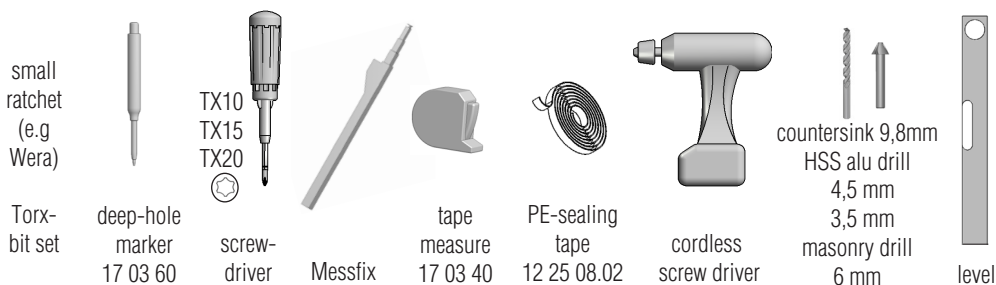
accessory

**mounting material
is only included if
ordered with
mounting holes!**

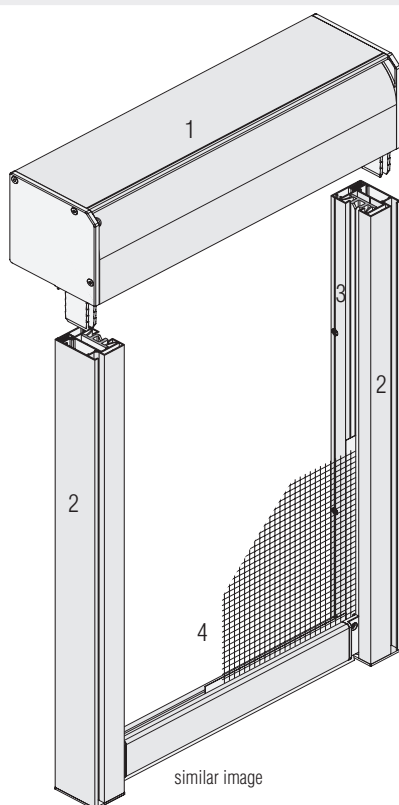


RK 4,2 x 25
15 03 42.25.TX

recommended tools



total view



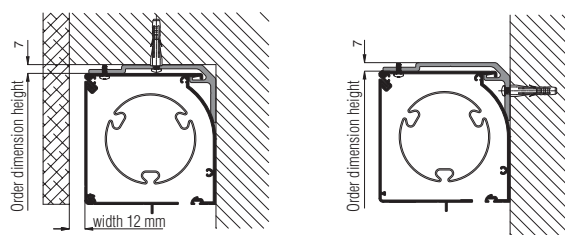
1. roller screen box
2. lateral guide rails
3. cover profile
4. mesh with sliding bar

similar image

possible assembly modes

Fixture with mounting plates

Suitable for mounting on uneven ground. The mounting plates can either be fixed to the wall or ceiling.



Self-supporting assembly

The roller screen box connected with the guide rails is self-supporting up to a width of 2000mm and must not additionally be screwed.

additional stop for sliding bar

Please start the assembly film for the assembly of the additional stop 14 44 30 via QR code

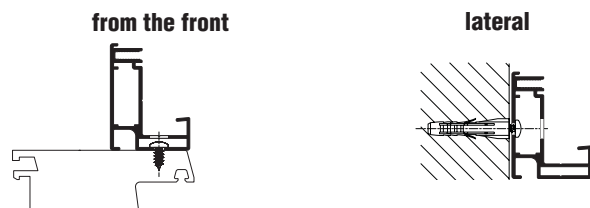


Installation Manual

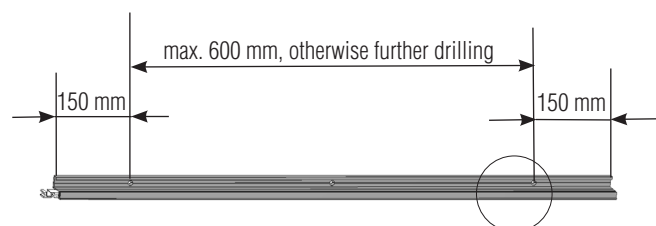
Motorized Roller Screen ER 2/20 **with standard guide rails**



1 Mounting holes for guiding rails (if ordered, continue with step 2)



Example: mounting holes from the front.

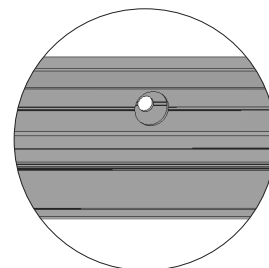


❶ Unscrew cover profile from the basic profiles of the lateral guide rails. Place them and the pvc profiles to the side.

❗ Place the pvc profiles on the flat side, not on the clips!

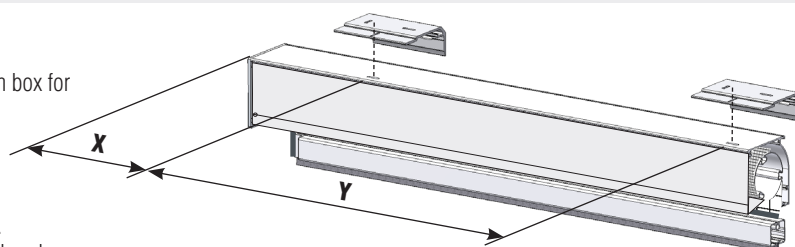


❷ Use a 4,5mm drill to drill a hole through the inner drilling groove of the lateral guide rails according to the stated measures. Then countersink the first profile wall with a 9,8mm countersink.



2.1 Fastening with installation plates

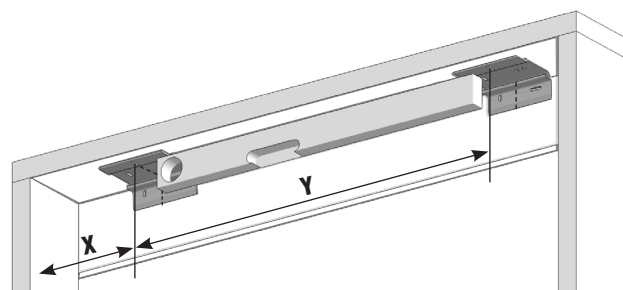
❶ Take dimension X and Y from the millings of the roller screen box for the fixation of the installation plates to the masonry.



Transfer dimension X and Y to the masonry (ceilling or wall).
Pre-drill the ground accordingly and if necessary install the dowel.

❗ Fix installation plates precisely aligned and horizontally to each other!

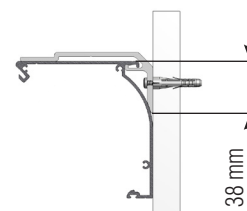
❷ Screw the installation plates. If necessary adjust with help of the elongated holes.



❗ Use always two screws per installation plate for their fixation (ceilling or wall)!

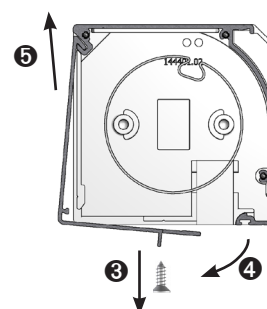
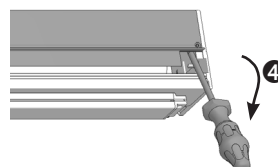
Pay attention to the screw head height: max. 3mm!

👍 For wall mounting, distance from top edge order size height to bottom edge installation plate = 38mm.



In case of a **one-piece faceplate** unscrew it on the left and right ❸, unclip the faceplate ❹. Push it away upwards ❺, and put it aside carefully.

👍 Carefully lever up the box faceplate on the left and right of the box by using a screwdriver with isolated blade and unclip it. Do not damage the fabric!



Installation Manual

Motorized Roller Screen ER 2/20 **with standard guide rails**



⑥ Hook the box carefully into the installation plates. Do not reach into the fabric!



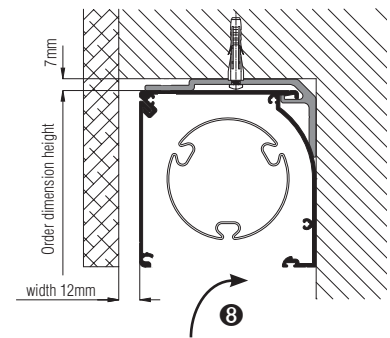
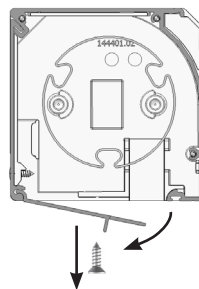
Glue a strip of PE sealing tape on the backside of the box profile to minimize vibration noises.

⑦ Use RK 4,2 x 9,5mm screws to fasten the box to the installation plates. Screw through the millings from bottom to top.



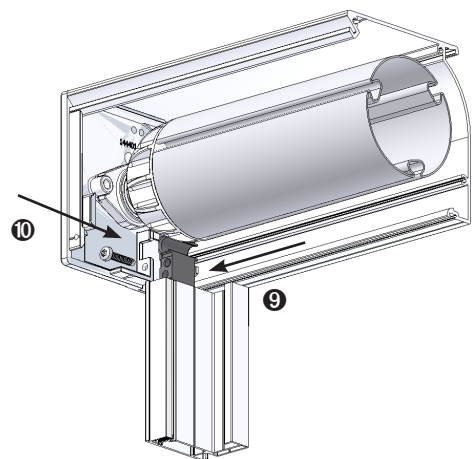
Use a hand screwdriver. Do not damage the fabric.

In case of a **two-piece faceplate** unscrew the screws of the lower faceplate on the left and right fold it away and put it aside carefully. Then carefully hook the box into the installation plates ⑧, do not reach into the fabric!



In case of a two-piece faceplate the screwing of the box to the mounting plates is only possible after the electrical start-up. See point 4.

⑨ Slide the basic profiles of the lateral guide rails together with the pvc legs from inside into the side caps of the box profile and fix them with a round-head screw ⑩ RK 4,2 x 25mm.



continue with item **3**

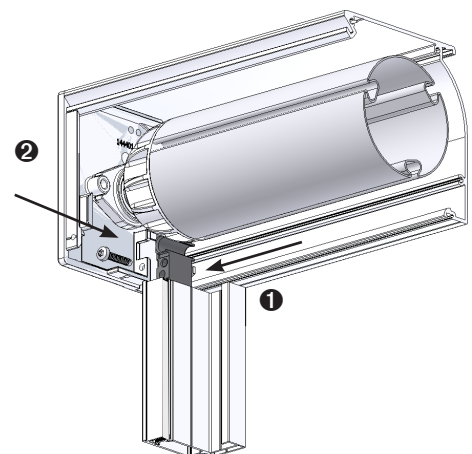
2.2 Self-supporting installation (order size width <2000mm)



Glue a strip of PE sealing tape on the backside of the box profile to minimize vibration noises.

Unscrew box faceplate as described with item **2.1**, steps ③ to ⑤.

① Insert the basic profiles of the lateral guide rails together with the pvc legs from inside into the side caps of the box profile and fix them with round-head screw RK 4,2 x 25mm ②.



③ Upright the completely assembled roller screen and in bring it into an installation position.



The guide rails must not tilt to the side! Keep them parallel!

Installation Manual

Motorized Roller Screen ER 2/20 **with standard guide rails**



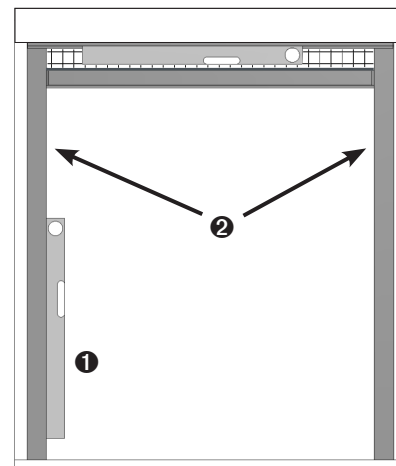
3 Screwing on the motorized roller blind (from the front)

 **Check requirements for the electrical connection. If necessary carried out by an electrician. The endposition setting with help of the installation cable can only be carried out after the successful installation on the basis of the enclosed installation manual.**

1 Align box horizontally and basic profiles vertically to the masonry.

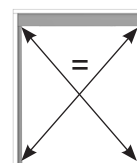
 **Use a telescopic measuring rod and a long water level to achieve an accurate alignment.**

2 Mark upper and lower drilling positions with a deep hole marker 17 03 60, pre-drill the ground accordingly and screw on with the appropriate mounting screws.



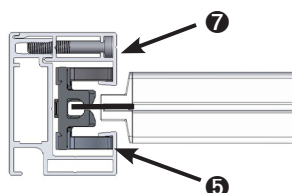
 **Pre-drill with a 2,2mm drill for wooden windows and pvc windows.**

! **Ensure a parallel alignment of the guide rails! Match the diagonals!**



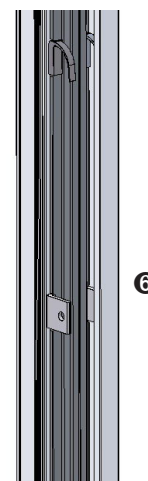
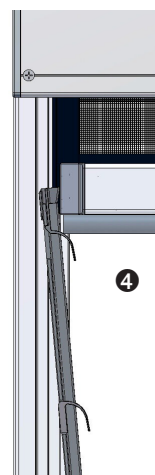
3 Firmly tighten the mounting screws. Then check again the clearance between the guide rails **+/- 1mm**.

4 Insert the plastic guide profiles with the end pieces ahead into the zippers (right and left) and place it into the basic profiles of the lateral guide rails.



! **Make sure that the rear clips are clipped into the front groove of the basic profile 5 hanging with a free punch in the height fixing part 6.**

7 Screw on the cover profiles flush with the basic profile at the bottom.



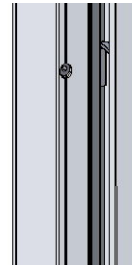
Installation Manual

Motorized Roller Screen ER 2/20 **with standard guide rails**



❗ Make sure that the front clips are clipped in the front groove of the basic profile and that a free punch of the pvc guiding profile hangs in the height fixing part.

❗ Make sure that all clips are spring-loaded located in the respective groove and that the pvc guiding profile is straight.



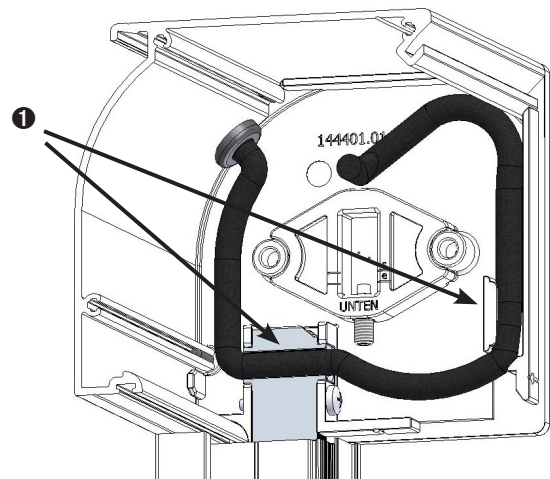
4 Cabel testing and box mounting

⚠ Danger - Correct position of the motor ⚠

❶ Check whether the cable is in contact with the inside of the side cap and if it is clipped into both cable guides (see sketch). If necessary wire according to sketch.



Danger by electrical shock!

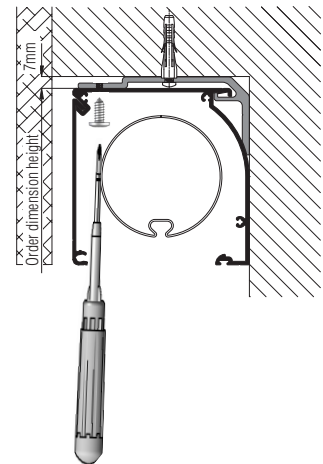


❷ Switch on the fuse and take the roller screen into operation as described in the enclosed adjustment instruction.

❸ **When mounting with installation plates** drive the sliding bar into the factory-set lower end position by using the mounting cable.

❹ Use screws RK 4,2 x 9,5mm to fasten the box to the installation plates. Screw through the screw millings from bottom to top.

❗ Use a hand screwdriver. Do not damage the fabric.



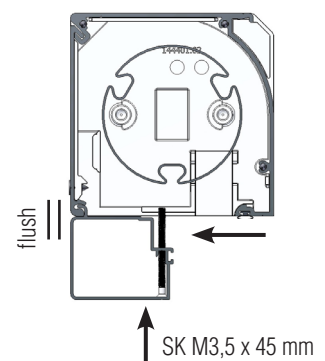
5 Setting the end positions

Set the lower and upper end positions of the sliding bar according to the enclosed adjustment manual.

Insert the faceplate again, hinge it up respectively snap it into place and screw it on the left and right.

In case of an elongated **two-piece faceplate** make sure that the elongating profile is fully pushed upwards and flush with the front faceplate.

❗ Make sure that the lateral guide rails won't be scratched when inserting the faceplates.



Installation Manual

Motorized Roller Screen ER 2/20 **with standard guide rails**



6 Inspection - sliding bar in upper end position

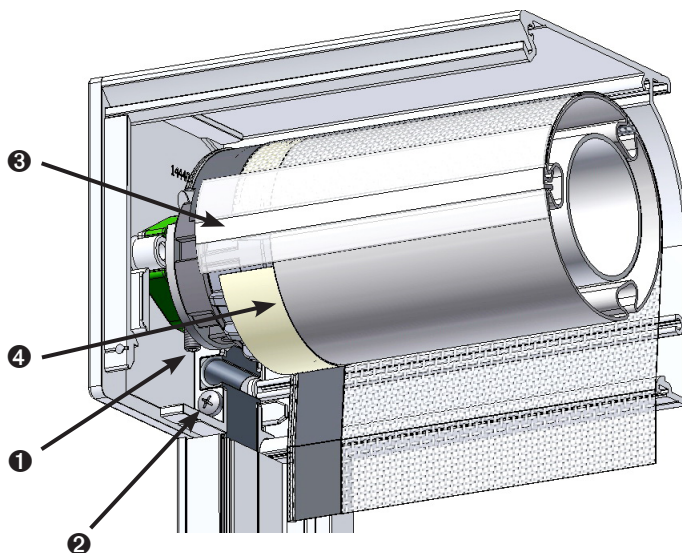
! After setting the end positions please check whether the sliding bar lines up precisely in the upper end position or not.

Should it run obliquely (>4mm) please check the following points:

- Small differences of <4mm can be corrected via a setscrew of the green motor trunnion adapter. For this turn the setscrew **1** up or down with an Allen key SW 2,5mm. Maximum adjusting range = 4mm.
- The lateral guide rails have to be secured inside of the side caps with the pvc trunnion via the round head screw RK 4,2x25mm **2**. See **2.1** subitem **9** and **10**.
- The lateral guide rails must be outside aligned with the side caps (ER2/20 and 2/30).
- The fabric has to be placed exactly in the middle of the width of the steel shaft profile. The spiral of the lateral zipper protrudes the shaft adapter for about 2mm. In order to correct this clear the end positions and run down the fabric thus far that the upper fabric with the click strip becomes visible and accessible. Center the fabric **3**. If necessary release the click strip. Set the end positions again.
- The box must be installed exactly horizontally.
- The lateral guide rails must be installed exactly vertically and the clear dimension must have a maximum tolerance of **+/- 1mm**.
- Make sure that all clips of the inner pvc leading profile are clipped neatly.
- The inner pvc guiding profiles are flush with the lateral guide rail at the bottom and have a distance of about **4-5mm** to the box.

Should the sliding bar still slope we recommend the following:

- Remove the face plate.
- Delete the end positions and run down the sliding bar thus far that the upper end of the fabric and the click cord are visible and accessible.



- Now the angular diameter on the shaft adapter must be increased on the sagging side.
- Glue one layer (revolution) of the fabric adhesive tape 213401.19 around the shaft adapter for each 5mm which must be corrected in height.
- The edge of the adhesive tape must be flush aligned with the end of the steel shaft profile **4**. The respective layer is interrupted by the upper end of the fabric (click cord **3**). Set the end positions again.
- The slant of the sliding bar can only be assessed after the second run.

Installation Manual

Motorized Roller Screen ER 2/20 **with standard guide rails**



7 Selection of operation systems

Select your operating system from the following list.

By scanning the QR_code you can see the following videos:

- operation
- wiring diagram for the connection of the motor
- teaching in of the respective operating system
- setting of the end positions

❶ cable controlled **K** motor 230V with pushbutton inside and outside



❷ cable controlled **K** motor 230V with remote operation inside and pushbutton operation outside



❸ cable controlled **K** motor 230V with Somfy TaHoma Smart Home



❹ remote controlled **F** motor 230V with remote operation inside and outside



❺ remote controlled **F** motor 230V with remote operation inside and pushbutton operation outside (with automatic closing function) inside and outside



❻ remote controlled **F** motor 230V with KNX-home automation (with automatic closing function)



❼ remote controlled **F** motor 12V (DC) with remote operation inside and outside (with solar panel)



❽ cable controlled **K** motor 12V (DC) with pushbutton operation inside and outside + second emergency exit

