

# Adjustment Manual

for remote controlled Neher motors with 6-channel remote control - 868 MHz 22 44 73  
- 915 MHz 22 44 78

Please follow these instructions by all means!



Device function	Intended use
<ul style="list-style-type: none"> <li>blind protection (torque limiting)</li> <li>starting up the drive with service cable or remote</li> </ul>	<ul style="list-style-type: none"> <li>please note that radio equipment are not allowed to be used in areas with a higher disruptive factor (e.g. hospitals, airports,...)</li> <li>the remote is only permitted for devices or electric facilities where interferences in the hand-/wall transmitter or receiver does not pose a risk to humans, animals or objects, or where this risk is covered by other safety devices</li> <li>the operator is no way protected from interferences from other telecommunications or facilities (e.g. also radio controlled equipment) which are licensed to operate in the same frequency range</li> </ul>
As-delivered condition	
<ul style="list-style-type: none"> <li>preset end positions, 15cm above the ground</li> </ul>	
Perfect using of the radio signal	<p><b>Please note before mounting</b></p> <ul style="list-style-type: none"> <li>motor is only in working order in installed condition</li> <li>connection only in voltage free state</li> </ul>
<ul style="list-style-type: none"> <li>the minimum clearance between the radio drives must be 15cm</li> <li>do not bent the antenna</li> <li>do not shorten or extend the antenna</li> <li>change the position of the antenna if the reception is poor</li> <li>if possible antenna should be laid freely</li> </ul> <p><b>Attention:</b> make sure that there is no contact between antenna and aluminium profiles. The antenna must be laid upwards or downwards but in no case in direction to the fabric</p>	

**General information**

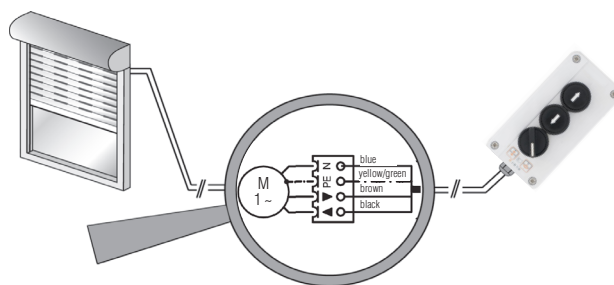
- risk of injury due to electrocution!
- the connections to the 230V mains must be made by an authorised specialist. Check the system regularly for wear or damage

## 1 End position setting and channel setting

**⚠ Connection only in voltage free status!  
Retain cable winding on the motor head for revision purposes!**

Should the motor already be installed disconnect it shortly from the grid and continue with point 3.

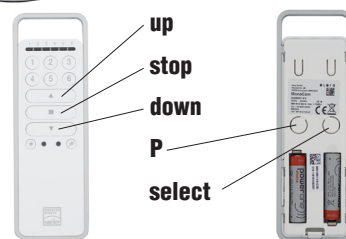
- Connect drives separately with installation cable like illustrated.
- put the plug of the installation cable into the socket (230V).



### Teach-in of 6-channel remote

**⚠ Setting must be finished within 5 min. after disconnection!**

- Turn the rotary switch of the installation cable to the **left**.
- The motors are in readiness to learn for 5 min. after a brief interruption of the mains voltage. Select the channel to be taught for the corresponding roller screen. You can choose between 6 individual channels by pressing the respective number key.
- Open the lid on the back side of 6-channel remote. Press the **(S) select**-button on the back side of the 6-channel remote (see image) that has to be taught-in. Shortly thereafter the motors run up and down for 2 minutes. During this time the 6-channel remote can be taught-in.
- Go up with the 6-channel remote as close as possible to the motor to be taught. In case of several systems the remote only addresses the closest motor. Press the **up**-button **directly** after the start of run up (1 sec.). The motor stops shortly and continues to run up. Press the **down**-button **directly** after the start of a run down (1 sec.). The motor stops. Press the **stop**-button for 6 seconds. The 6-channel remote is hereby taught.



For controlling further motors with the same remote select the channel to be taught for the corresponding roller screen, press the **select (S)** button and proceed as described in point 6.

**👍 At the end of the 2 min. time window the motors switch off the learning mode. For teaching-in further motors briefly interrupt the mains voltage and repeat the steps starting with point 4. Attention: the already taught-in motors will also start again but can be stopped after selecting the corresponding channel!**

**👍 Recommendation: if possible use a separate 6-channel remote for each room.**

# Adjustment Manual

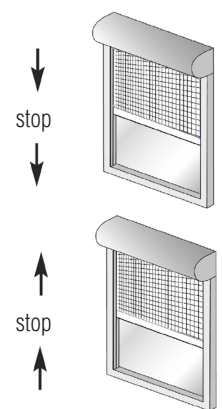
for remote controlled Neher motors with 6-channel remote control - 868 MHz 22 44 73  
- 915 MHz 22 44 78



## End position setting

### ⚠ Setting must be finished within 5 min. after disconnection!

- 7 Select the channel (1-6) for the corresponding motor to be taught. Move the sliding bar into a central position (distance from the top at least 30cm). Now **simultaneously** press the **up-** and **down-**buttons and keep pressing them until the motor shortly runs up and down after 5 seconds.
- 8 Position the sliding bar approx. 5cm above the desired **lower** end position. The motor slowly runs down, stops shortly and gets faster then. Afterwards approach to the lower end position (corrections are possible via the buttons). **Make sure that the fabric hangs tautly in the lower end position!** Now press the **up-**button until the motor automatically stops. Hereby the **lower** end position is set.
- 9 Press the **up-**button again. Move the sliding bar **up** to the stop (torque cut-out). While doing so the motor slowly starts running, stops shortly and gets faster until it stops at the top. Now press the **down-**button until the motor automatically stops. Hereby the **upper** end position is set.



### ⚠ The motorized roller screen has to be moved up and down three times after the end position setting. Thus the motor optimizes his setting.

### ⚠ Comment: to set the end positions again shortly disconnect the motor from the grid and repeat the steps within 5 min. starting from point 6.

## 2 Optional: teaching-in of an intermediate position

### Programming of an intermediate position

For teaching-in an intermediate position a radio transmitter must be taught in and the motor has to be in the lower end position.

- 1 Press and hold the **up-**button up to the desired position.
- 2 As soon as you reach this position press additionally the **stop-**button. Then release both buttons. The motor stops. Hereby the intermediate position is set (if you keep pressing the buttons longer than 6 sec. the intermediate position will be deleted immediately).

### 👍 For changing the intermediate position repeat the steps starting from point 1. The former intermediate position will be deleted automatically.

### Approaching to the intermediate position.

- 1 Press the **up-**button twice in quick succession (double click).
- 2 The motor approaches to the stored intermediate position. If there is no intermediate position stored the motor approaches to the upper end position.

## 3 Optional: teaching-in of further radio transmitter (maximum 16 radio channels can be taught in)

- 1 Press simultaneously (for 3 sec.) the **up-**, **down-** and **(P) programming-**buttons of an already taught-in radio remote/channel (with 6-channel remote). The status LED lights up briefly. The motor is in willingness to learn for 5 minutes.
- 2 Press the **(P) programming-**button on the backside of the radio transmitter to be taught until the motor starts. The motors run up and down in random cycles for 2 minutes. Go up with the remote as close as possible to the motor to be taught. In case of several systems the remote only addresses the closest motor. Press the **up-**button **immediately** after the start of the run-up. The motor stops briefly. Press the **down-**button **immediately** after the start of the run-down. The motor stops. Press the **stop-**button for 6 seconds. The remote/channel is now taught to this motor.

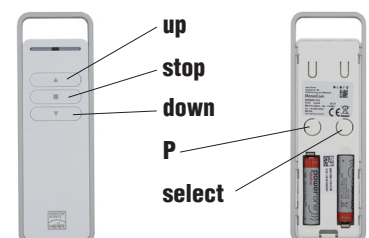
## 4 Optional: delete radio transmitter

### Delete individual radio transmitter

- 1 Select the channel to be deleted. Press simultaneously the **(P) programming-** and **stop-**button.
- 2 Keep pressing this key combination until the status LED goes out (about 6 sec.). Hereby the remote is deleted.

### Delete all remotes/channels

- 1 Select the channel of the 6-channel remote to be deleted. Press simultaneously the **(P) programming-**, **up-**, **stop-** and **down-**button of an already taught-in remote.



# Adjustment Manual

for remote controlled Neher motors with 6-channel remote control - 868 MHz 22 44 73  
- 915 MHz 22 44 78



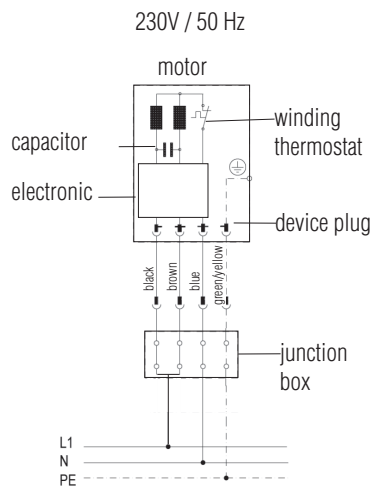
② Keep pressing this key combination until the status LED goes out (about 6 sec.). Hereby all remotes/channels are deleted.

## 5 Connection example for the electrician



**The motor controls in up-/down direction must be mutually locked. A changeover delay of min. 0,5 sec. must be ensured.**

**Several motors can be connected parallelly. Pay attention to the maximum switching capacity of the switching point.**



## 6 Status LED and meaning

- orange flashes slowly	- channel (transmitter) is not taught to receiver
- orange flashes fast	- channel (transmitter) is in learning mode. Operation of already taught-in receiver not possible
- orange flashes fast (approx. each 2 sec.)	- more than 10 receiver ready for learning
- orange flashes, then green	- transmission signal is sent, all responses received
- orange or green flashes repeated, then red after 6 sec.	- channel (transmitter) is deleted
- orange flashes, then red	- transmission signal is sent, not all responses received
- red flashes fast	- battery almost exhausted

## 7 Troubleshooting

Fault/Disorder	Possible causes	Debugging
- radio learning mode does not start	- connection error - motor is not connected with the mains - the window has already expired (5 min.) - thermostate has triggered - radio wall transmitter without or with low battery	- check connection - check mains voltage - interrupt mains voltage briefly - allow motor to cool down - check radio wall transmitter (status LED must light up at the push of button)
- radio wall transmitter is not taught-in	- up/down-buttons were pressed too late. Please consider the time window (1 sec.) - transmitter is already taught-in	- start the radio learning mode again - press stop-button
- motor runs only in one direction	- faulty connection	- check connection
- motor does not react on double-key pressing on radio wall transmitter	- time window has already expired after mains return (5 min.) - motor is not connected with the mains - radio wall transmitter is not taught-in	- interrupt mains voltage briefly - check mains connection - teach-in radio wall transmitter
- motor does not run, status LED light is off	- battery is empty - battery is inserted incorrectly	- insert new battery - insert battery correctly
- motor does not run, status LED light is on	- receiver outside of the wireless range - radio wall transmitter is not taught to receiver	- reduce distance to receiver - teach-in radio wall transmitter
- motor runs to the wrong direction	- directions are incorrectly taught-in	- delete r-transmitter and teach it in correctly
- motor does not react	- thermostat has triggered	- allow motor to cool down
- motor stops after a short run	- end positions are not set	- set end positions
- motor does not teach-in end positions	- random travel - travel to end position/stop too short	- delete end positions and set them again - motor must run up to the short stop